



LOW NOISE DC VOLTAGE SOURCE

LP6016-01P

USB Driver Installation Manual

■Registered Trademarks

Microsoft is a registered trademark of Microsoft Corporation.

Windows is a registered trademark of Microsoft Corporation.

Other company or product names are generally trademarks or registered trademarks of the company to which each relates.

DA00072555-001

LOW NOISE DC VOLTAGE SOURCE

LP6016-01P

USB Driver Installation Manual

———— Preface ————

Thank you very much for purchasing our **“LP6016-01P LOW NOISE DC VOLTAGE SOURCE”**

This manual explains about installing the USB driver for externally controlling LP6016-01P by connecting through USB.

● This manual has the following chapter organization

1. OUTLINE

Explains the operating environment of LP6016-01P USB driver and configuration of the installation file.

2. INSTALLATION METHOD

Explains the method of installing LP6016-01P USB driver.

This driver is exclusively for controlling LP6016-01P, and cannot be used for controlling other measurement equipments.

CONTENTS

| | Page |
|--|------|
| 1. OUTLINE | 1-1 |
| 1.1 Overview..... | 1-2 |
| 1.2 Operating Environment | 1-2 |
| 1.3 File Configuration..... | 1-2 |
| 2. INSTALLATION METHOD | 2-1 |
| 2.1 Connecting with the PC..... | 2-2 |
| 2.2 Installation Method (Windows 7)..... | 2-3 |
| 2.3 Installation Method (Windows 8.1)..... | 2-8 |
| 2.4 Installation Method (Windows 10)..... | 2-10 |

1. OUTLINE

| | |
|---------------------------------|-----|
| 1.1 Overview | 1-2 |
| 1.2 Operating Environment | 1-2 |
| 1.3 File Configuration | 1-2 |

1.1 Overview

When connecting LP6016-01P using “USB Cable (sold separately)” and controlling it remotely, install “USB Driver” according to this manual.

1.2 Operating Environment

[PC]

This manual is applicable only for PC/AT compatible machines that satisfy the following environment.

| | |
|----------|--|
| OS | Microsoft® Windows® 7 32 bit/64 bit English Version Microsoft® Windows® 8.1 32 bit/64 bit English Version Microsoft® Windows® 10 32 bit/64 bit English Version |
| USB port | USB 2.0 |
| | |

[USB cable]

USB2.0AB type (A male terminal, B male terminal)

1.3 File Configuration

In “NF_LP6016-01P_CommClass (zip file)” downloaded from the website of NF Corporation contains the following files.

- USB driver installation definition file (inf file)
NF_LP6016-01P_CommClass.inf
It is used when installing the USB driver.
- USB driver security catalog file (cat file)
NF_LP6016-01P_CommClass.cat
It is used when installing the USB driver.
- LP6016-01P_USB Driver Installation Manual (PDF file)
LP6016-01P_USB_Driver_manual_001_Eng.pdf
Refer to this instructions manual.

2. INSTALLATION METHOD

| | |
|---|------|
| 2.1 Connecting with the PC | 2-2 |
| 2.2 Installation Method (Windows 7) | 2-3 |
| 2.3 Installation Method (Windows 8.1) | 2-8 |
| 2.4 Installation Method (Windows 10) | 2-10 |

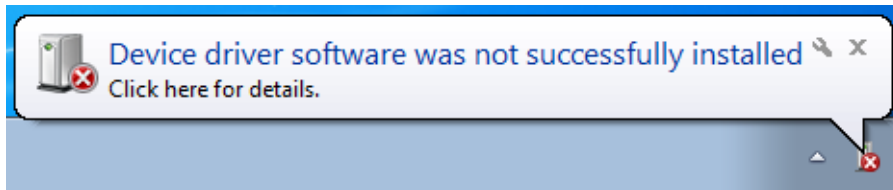
2.1 Connecting with the PC

Before installing the USB driver of LP6016-01P, connect LP6016-01P and computer using the “USB Cable” (sold separately).

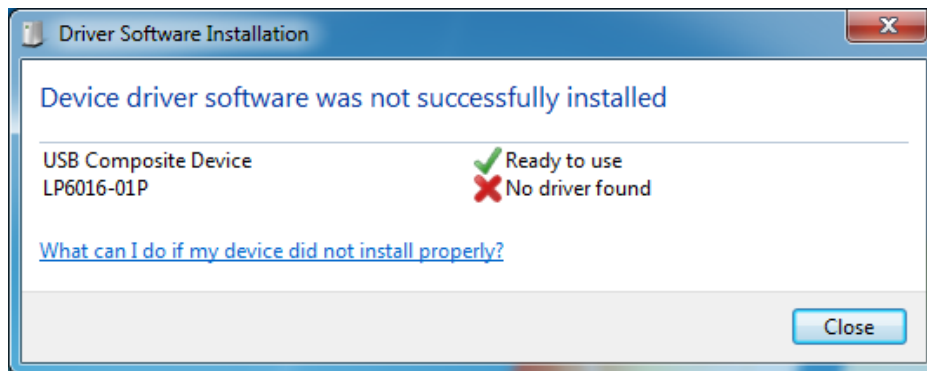
1. Connect the A terminal of “USB Cable” (sold separately) to the USB port of the PC.
2. Turn on the power of LP6016-01P, and after the main screen appears, connect the B terminal of “USB Cable” (sold separately) to LP6016-01P.
3. Procedure after connecting to LP6016-01P differs according to the OS of your PC.
 - When using Windows 7, refer to “2.2 Installation Method (Windows 7)”.
 - When using Windows 8.1, refer to “2.3 Installation Method (Windows 8.1)”.
 - When using Windows 10, refer to “2.4 Installation Method (Windows 10)”.

2.2 Installation Method (Windows 7)

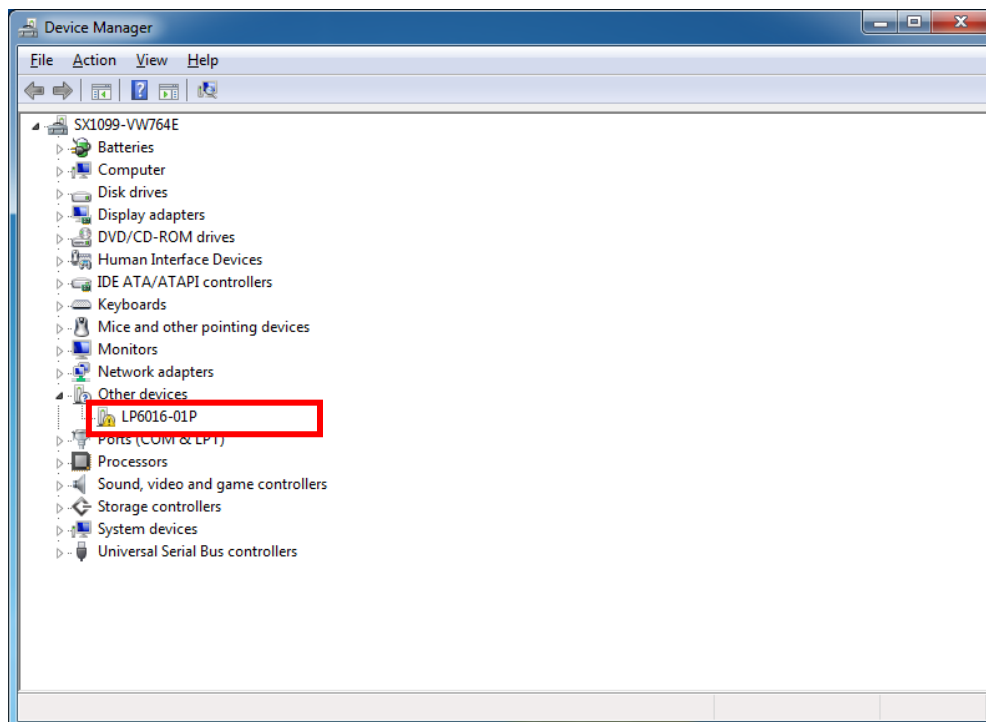
Step 1) After connecting the equipment to a PC, the following pop-up message will appear.



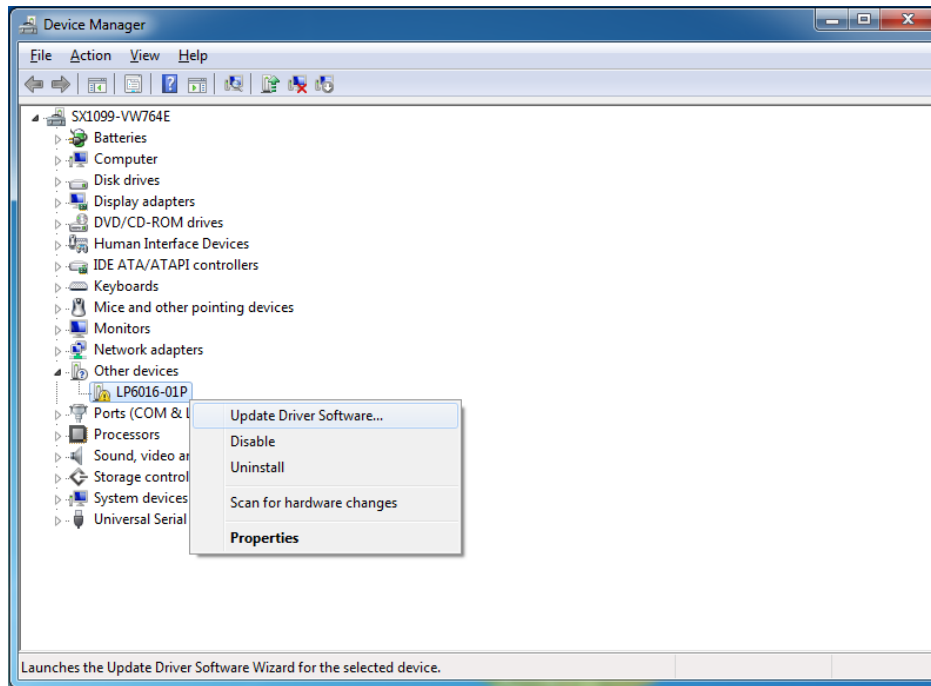
Click “Click here for details” will show the following error message. Click the “Close” button.



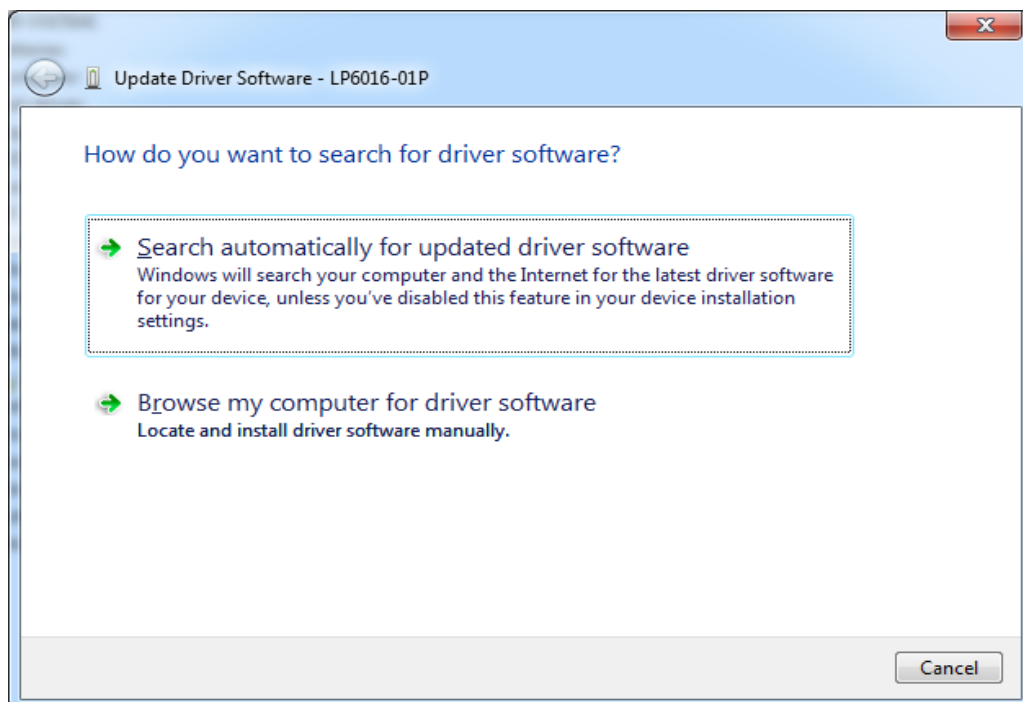
Step 2) Open Device Manager, and check the devices for which the installation failed. When devices for which is now known whether the installation failed or not, “!(Warning)” mark will be appear.



Step 3) Right click the unknown devices having “!(Warning)” mark, and select “Update Driver Software..” from the displayed menu.



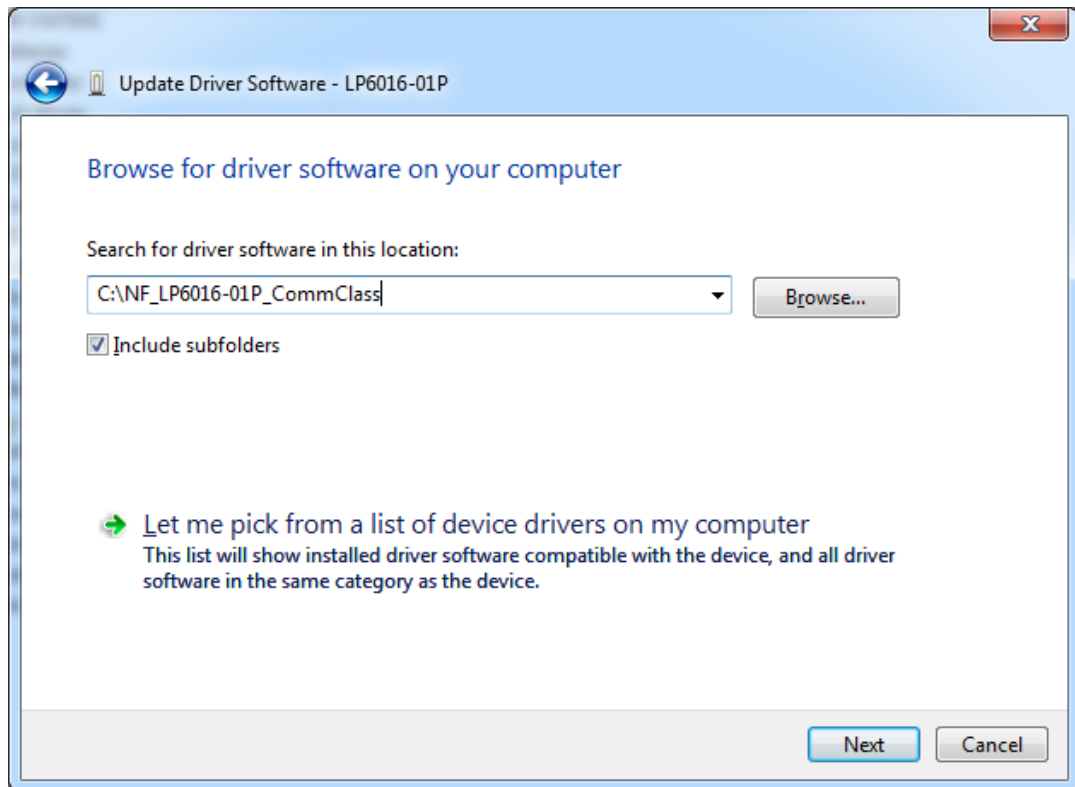
Step 4) Once the “Update Driver Software” dialog appears, click “Browse my computer for driver software”.



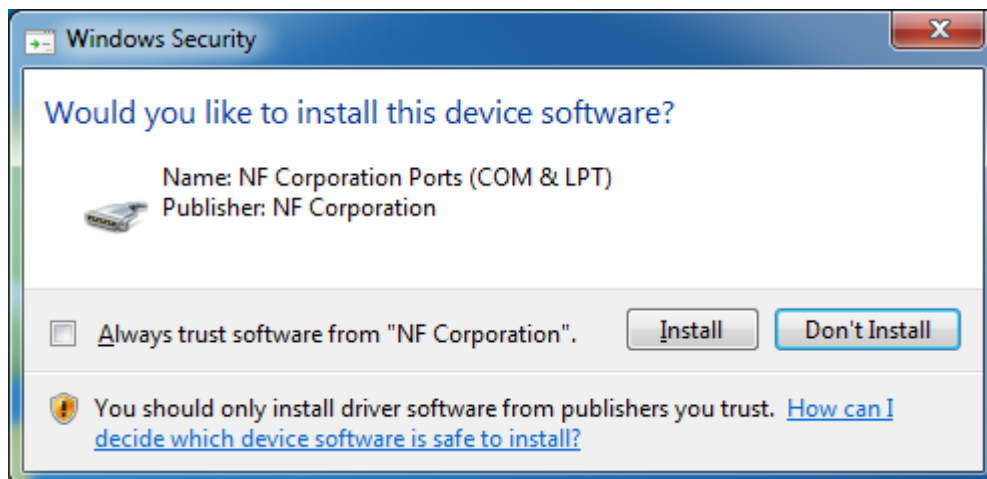
2. INSTALLATION METHOD

Step 5) Click the “Browse” button, specify the folder where you opened the downloaded driver file.

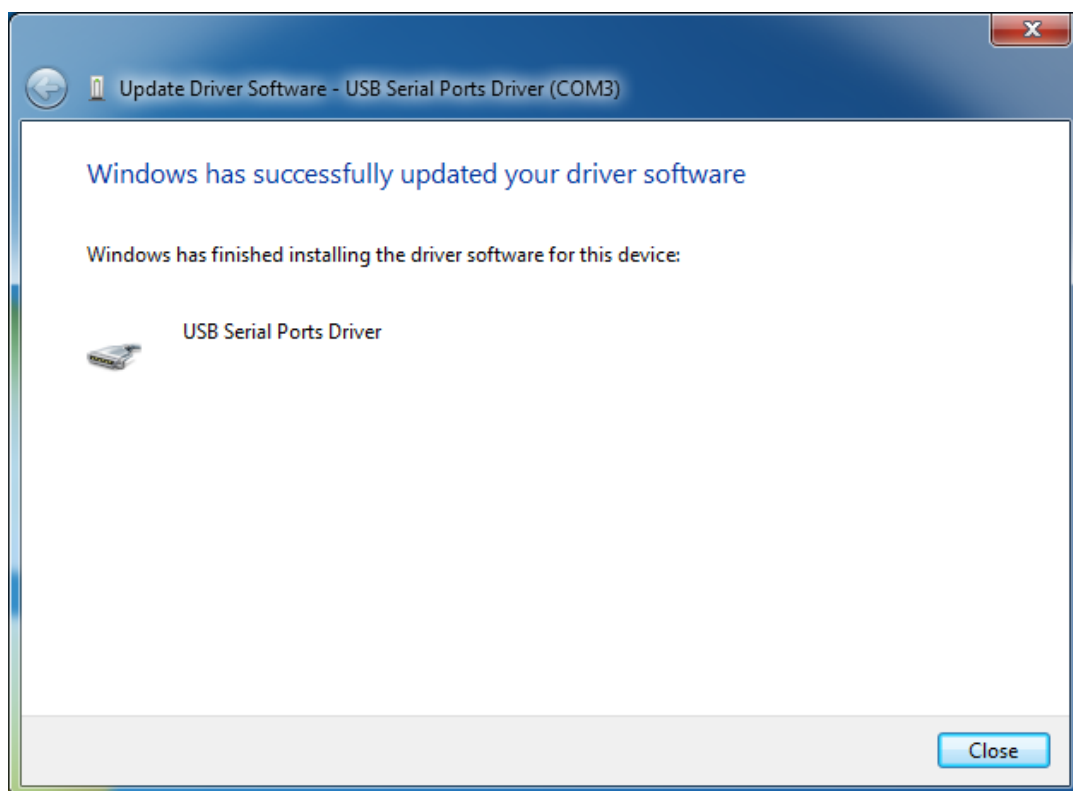
Click the “Next” button.



Step 6) When the following dialog appears during installation, click “Install”.

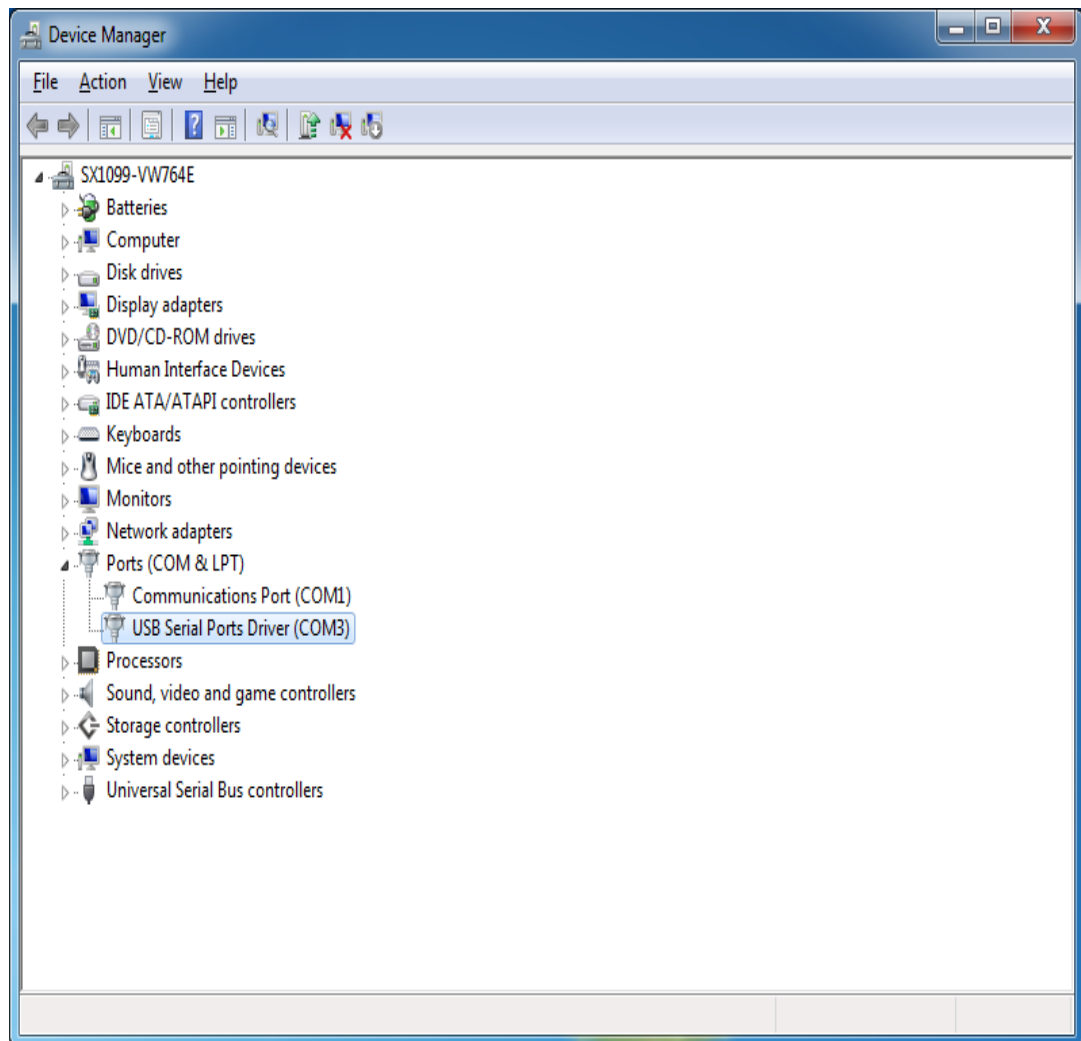


Step 7) After installation of the device driver is complete, click the “Close” button.



Step 8) Check in “Device Manager” whether the driver is correctly installed or not.

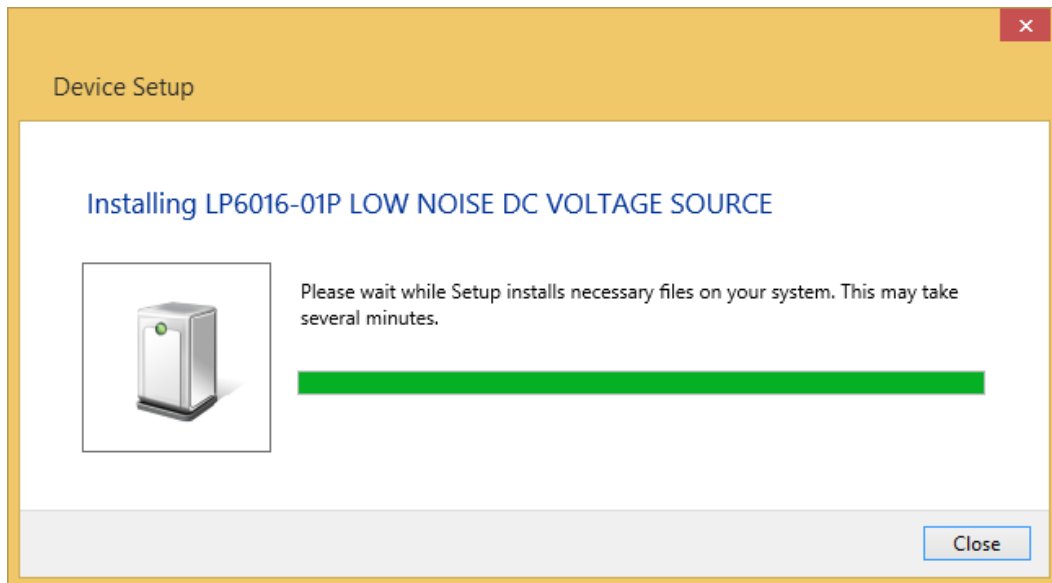
As shown in the following figure, check that “USB Serial Ports Driver” appears in the “Ports (COM & LPT)” tree.



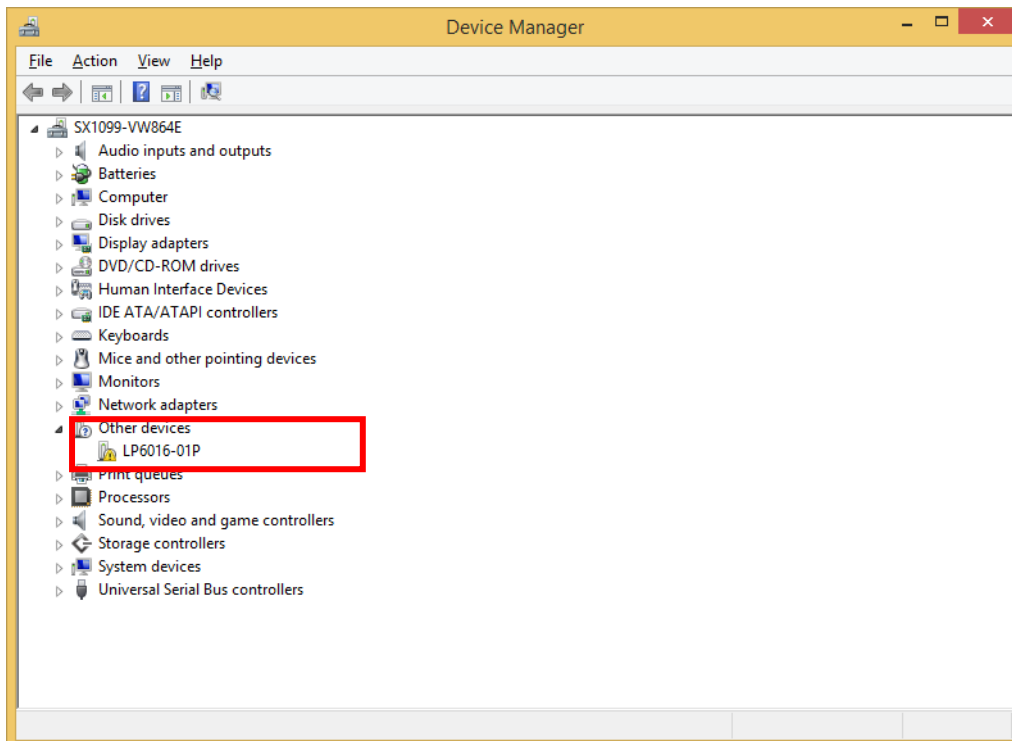
With this, installation of device driver of this device is complete.

2.3 Installation Method (Windows 8.1)

Step 1) After connecting the equipment to a PC, the following pop-up message will appear. Wait until this dialog will disappear.

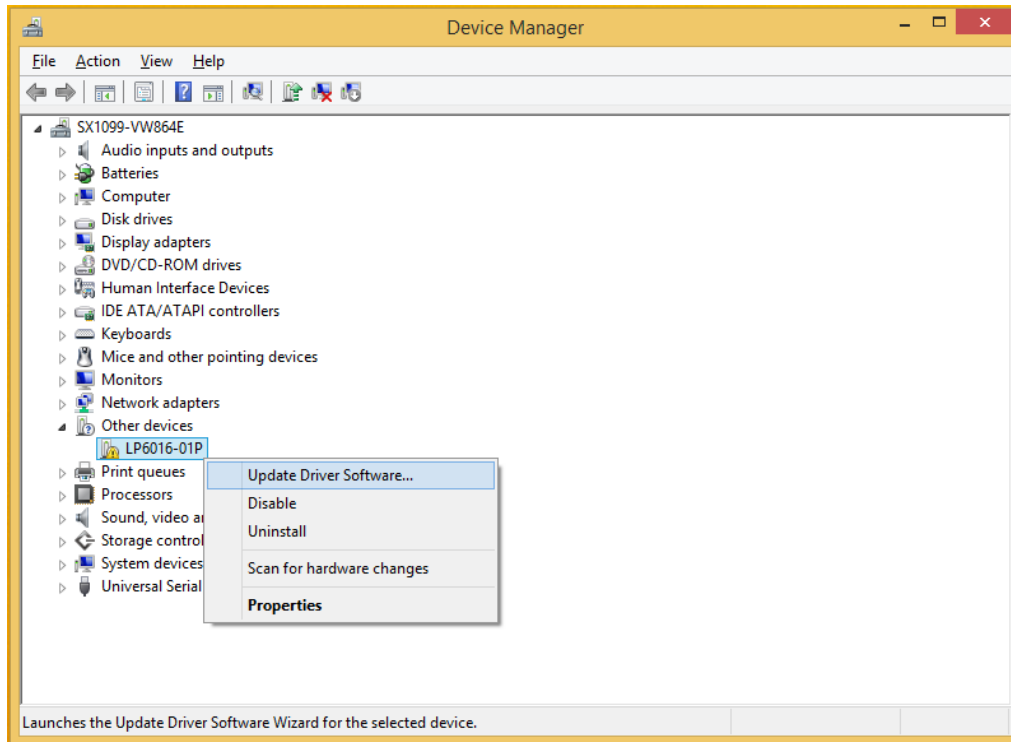


Step 2) Open Device Manager, and check the devices for which the installation failed. When devices for which is now known whether the installation failed or not, “!(Warning)” mark will be appear.



2. INSTALLATION METHOD

Step 3) Right click the unknown devices having “!(Warning)” mark, and select “Update Driver Software..” from the displayed menu.

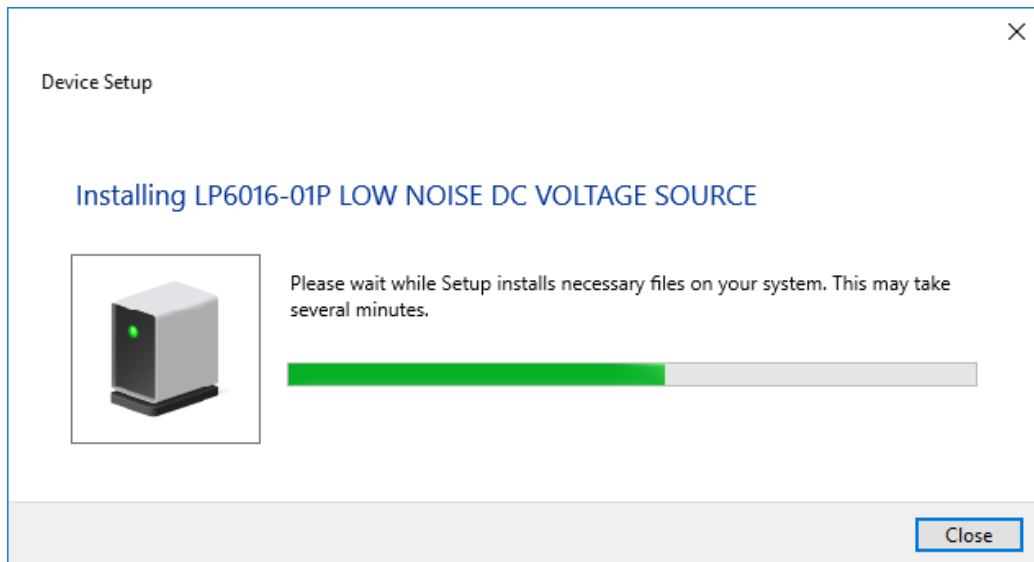


The following operations are as same as from Step 4) to Step 8) of “Installation Method(Windows 7)”. Please refer to those sections.

2.4 Installation Method (Windows 10)

After connecting the equipment to a PC, default driver of Windows will be installed.

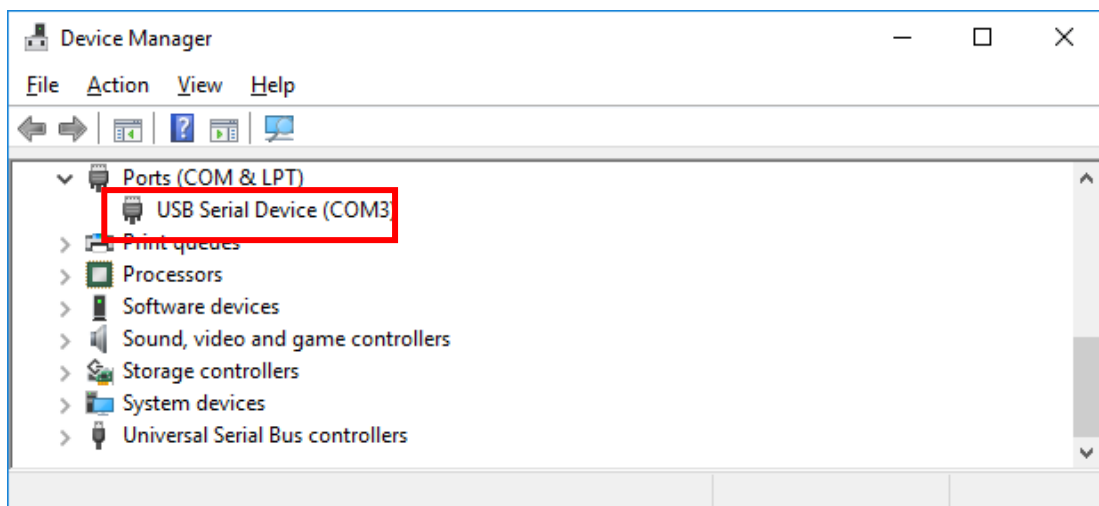
Step 1) After connecting the equipment to a PC, the following pop-up message will appear. Wait until this dialog will disappear.



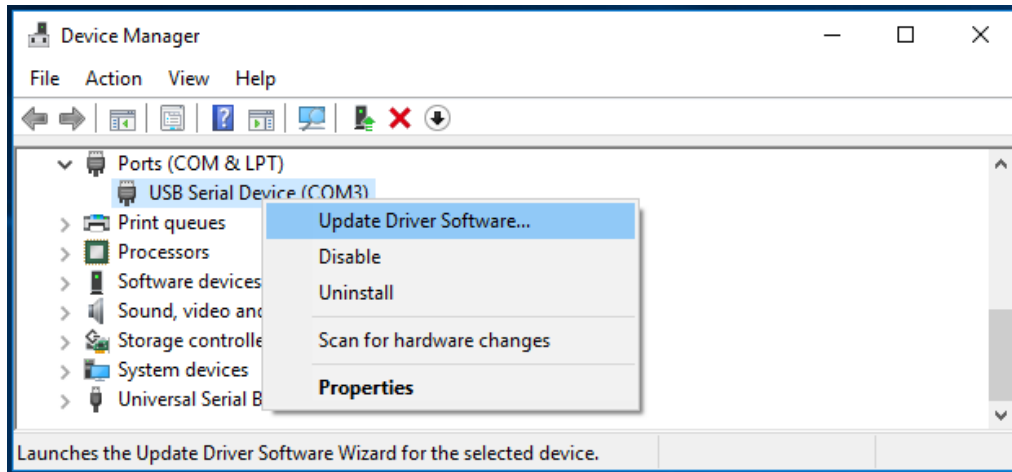
Step 2) Open Device Manager, and check the devices for which the installation.

"USB Serial Device(COM n)" appears in the "Ports (COM & LPT)" tree, default driver of Windows is installed.

When devices for which is now known whether the installation failed or not, "!(Warning)" mark will be appear.



Step 3) If the installation is failed, driver of NF corporation should be installed.
Right click the unknown devices having “!(Warning)” mark, and select
“Update Driver Software..” from the displayed menu.



The following operations are as same as from Step 4) to Step 8) of “Installation Method(Windows 7)”. Please refer to those sections.

NOTES

- Reproduction of the instruction manual, part or whole, is forbidden without prior written permission.
- The contents of the instruction manual are subject to change without notice.
- Information provided in the instruction manual is intended to be accurate and reliable. However, we assume no responsibility for any damage regarding the contents of the instruction manual.

If you have any uncertainty or you found an error or omission, please contact NF Corporation or one of our representatives from which you purchased the product.

LP6016-01P USB Driver Installation Manual

NF Corporation

6-3-20 Tsunashima Higashi, Kohoku-ku, Yokohama 223-8508, JAPAN

Phone: +81-45-545-8111

<http://www.nfcorp.co.jp/>

© Copyright 2019, **NF Corporation**

