



VISA Download

Procedure

DA00020409-001

VISA Download Procedure

Registered Trademarks

NI-VISA is a registered trademark of National Instruments Corporation in the United States.

Windows is a trademark of Microsoft Corporation in the United States.

Adobe and Acrobat are trademarks of Adobe Systems, Inc. in the United States.

Other company names and product names may be trademarks or registered trademarks of their respective companies.

Preface

This document explains the download and installation procedures of the NI-VISA driver required for remote control of NF's USBTMC products.

- **Before Reading This Manual**

The update procedure is provided in PDF format.

To read the documents, Adobe Reader Ver5 or later is required. Install it if necessary.

This manual assumes that you are familiar with the basic operations of the operating system (Microsoft Windows 2000/XP) that runs on your computer. For the basic operations of Windows and Windows-related terms such as "click" and "drag", refer to the user's guide or other related documents on Windows.

The screen images and messages shown in this manual are from Windows 2000. They may be different from those from Windows XP.

- **This manual has the following chapter organization.**

1. Preparation

This chapter describes the preparation.

2. Download and Installation Procedure

This chapter describes the download and installation procedure.

Contents

	Page
Preface	i
1. Preparation	1-1
1.1 Preparation	1-2
2. Download and Installation Procedure	2-1
2.1 Download Procedure	2-2
2.2 Installation Procedure	2-9

1. Preparation

1.1 Preparation 1-2

1.1 Preparation

A PC must be connected to the Internet in order to browse web pages.

Free hard disk space: approximately 100 MB.

2. Download and Installation Procedure

2.1 Download Procedure 2-2
2.2 Installation Procedure 2-9

2.1 Download Procedure

- 1) Start the web browser to display the following page on the National Instrument Corporation (NI) web site.

<http://www.ni.com/support/visa/>

- 2) Click “VISA driver downloads” on the page.

Questions on VISA or Instrument Drivers

Common Questions:

- **Instrument Driver Downloads**
Take me to the page where I can download instrument drivers.
- **VISA driver downloads**
Download the latest version of NI-VISA.
- **VISA Intro (pdf file)**
Download this pdf document to help you get started.
- **VISA Manuals**
Download VISA documentation (under VxIMMEMX).
- **Errors with my Instrument Driver (LabVIEW)**
Common errors with Instrument Drivers (in LabVIEW).
- **LabWindows/CVI Questions**
How to move a driver from LabWindows/CVI into LabVIEW.
- **Programming VISA Events (pdf file)**
Download this pdf document to help you get started with VISA Events.

How do I develop an instrument driver?

- **In LabVIEW?**

Your Feedback! ← Poor | Excellent → Yes No

Document Quality? Answered Your Question?

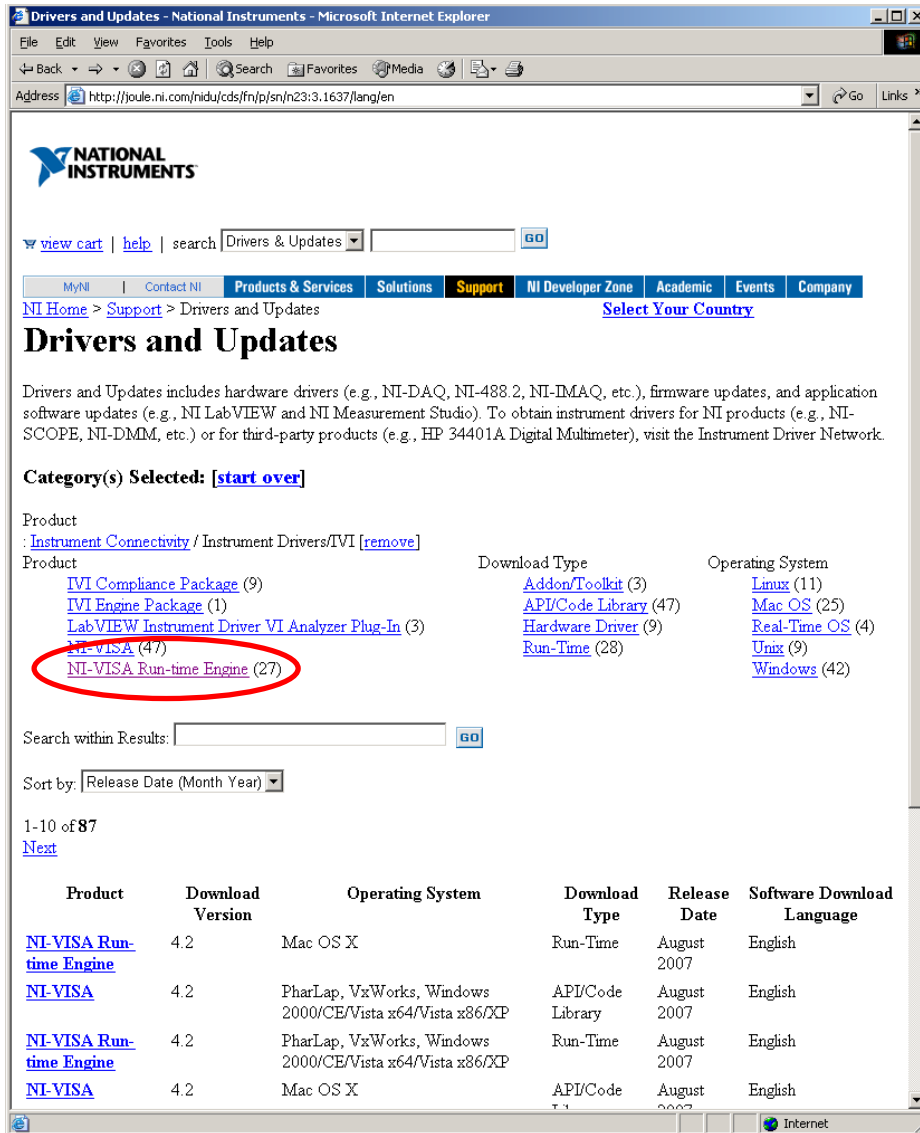
1 2 3 4 5

Please Provide Additional Feedback below

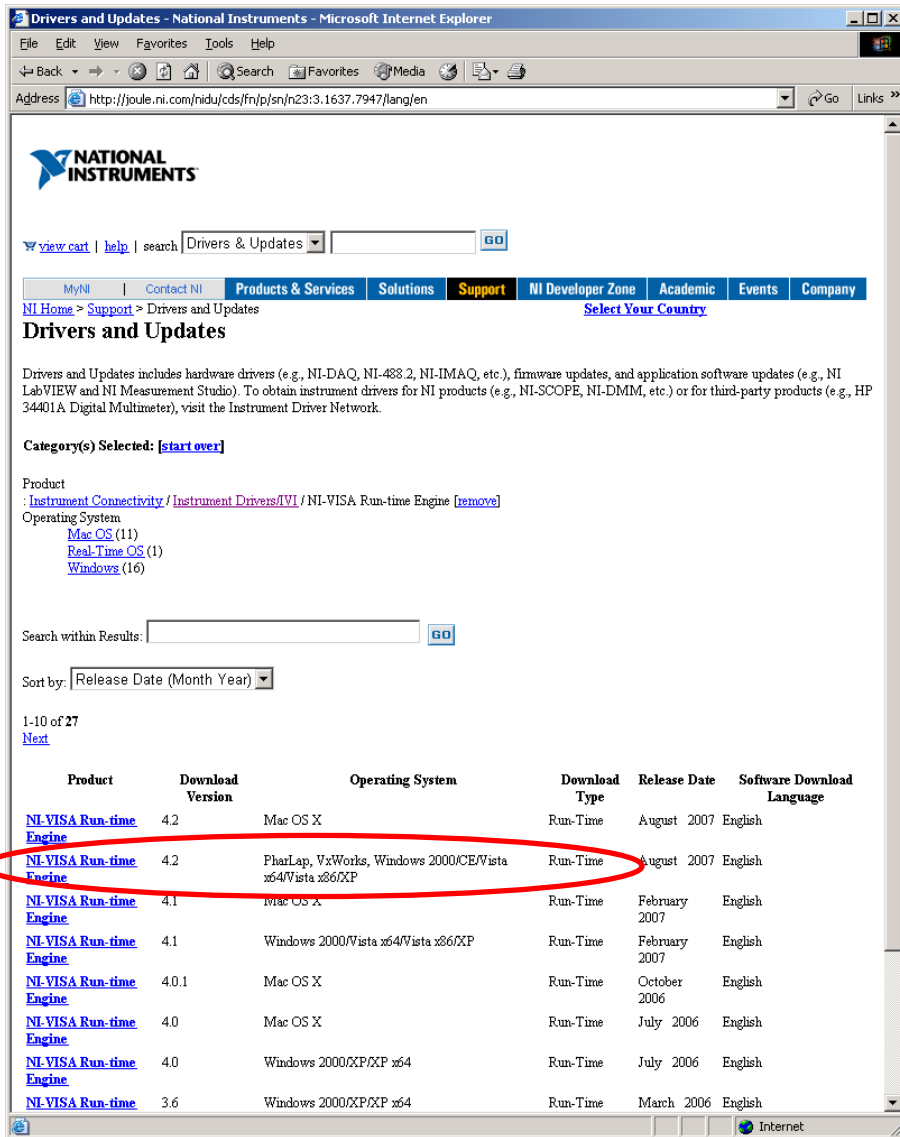
Please visit [Request Support](#) for product support inquiries. [Submit](#)

My Profile | RSS | Privacy | Legal | Contact NI © 2007 National Instruments Corporation. All rights reserved. | [E-Mail this Page](#)

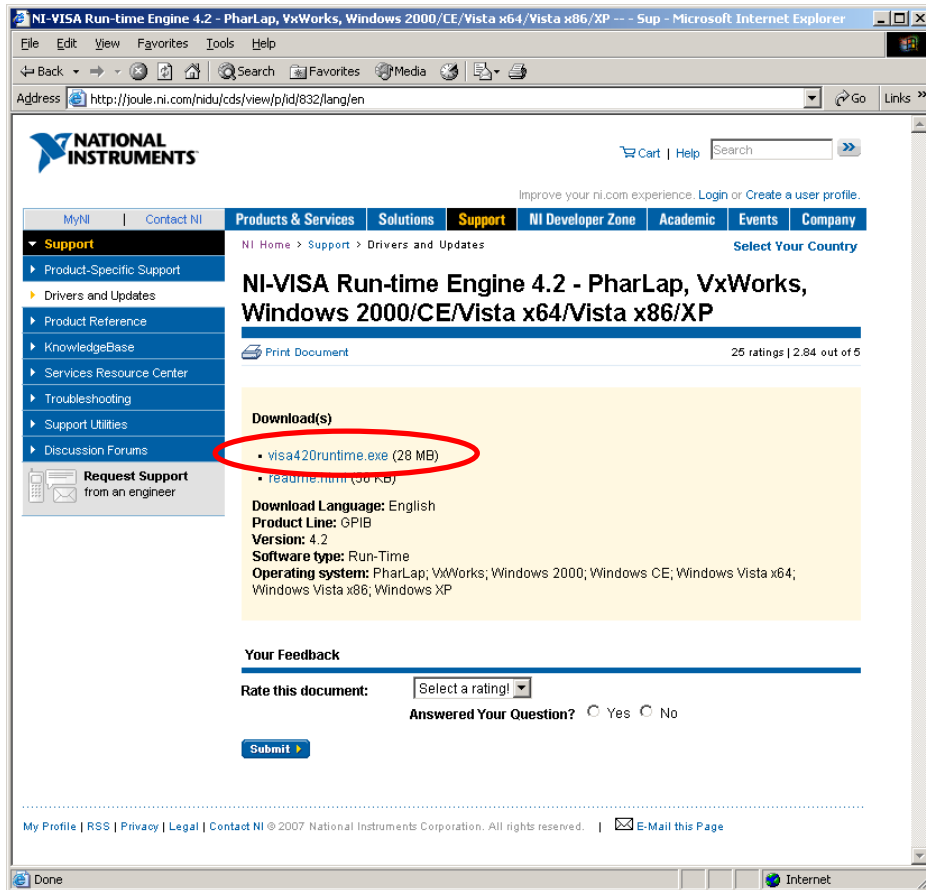
3) Click “NI-VISA Run-time Engine”.



- 4) Click the version supporting your Windows OS.
Click “NI-VISA Run-time Engine 4.2 PharLap, VxWorks...”.



- 5) The download page of the VISA driver is displayed.
NI user registration is required for downloading. If you have already registered, proceed to 8).
Click “visa420runtime.exe” on the screen to perform user registration.



- 6) “Security Alert” may be displayed, depending on your web browser setting. Click [OK] to continue. The input screen for the user profile is displayed. Red asterisks (*) indicate required fields. Input the required information.

Drivers and Updates - National Instruments - Microsoft Internet Explorer

Address: <https://sine.ni.com/apps/utf8/niup.ni>

NATIONAL INSTRUMENTS

My Profile NI Home

Drivers and Updates

Please complete the form below to continue or log into your existing profile on the right.

Benefits of Creating a Profile
 Your free NI.com profile gives you unlimited access to ni.com features only available to registered users.

- Access MyNI - your personalized web page at ni.com
- Place and view online orders and quotes
- Download and view technical documents, evaluation software, and example programs

Login

E-Mail Address

Password

[Can't remember your password?](#)

[Continue >](#)

* - indicates required field

Region

* Choose Your Country

* Language

Use this selection to tailor your ni.com experience to your region. As a worldwide company, NI offers localized product and application information.

My Information

* First Name * Last Name

* E-Mail Address

* Password * Confirm Password

* Area * Phone Number Ext.

Area Fax Number

Create your ni.com user ID by entering your name, e-mail address, and unique password. Use your e-mail address and password to login to your personalized ni.com account and receive the latest NI information that fits your needs. Remember that your password is case-sensitive.

My Address

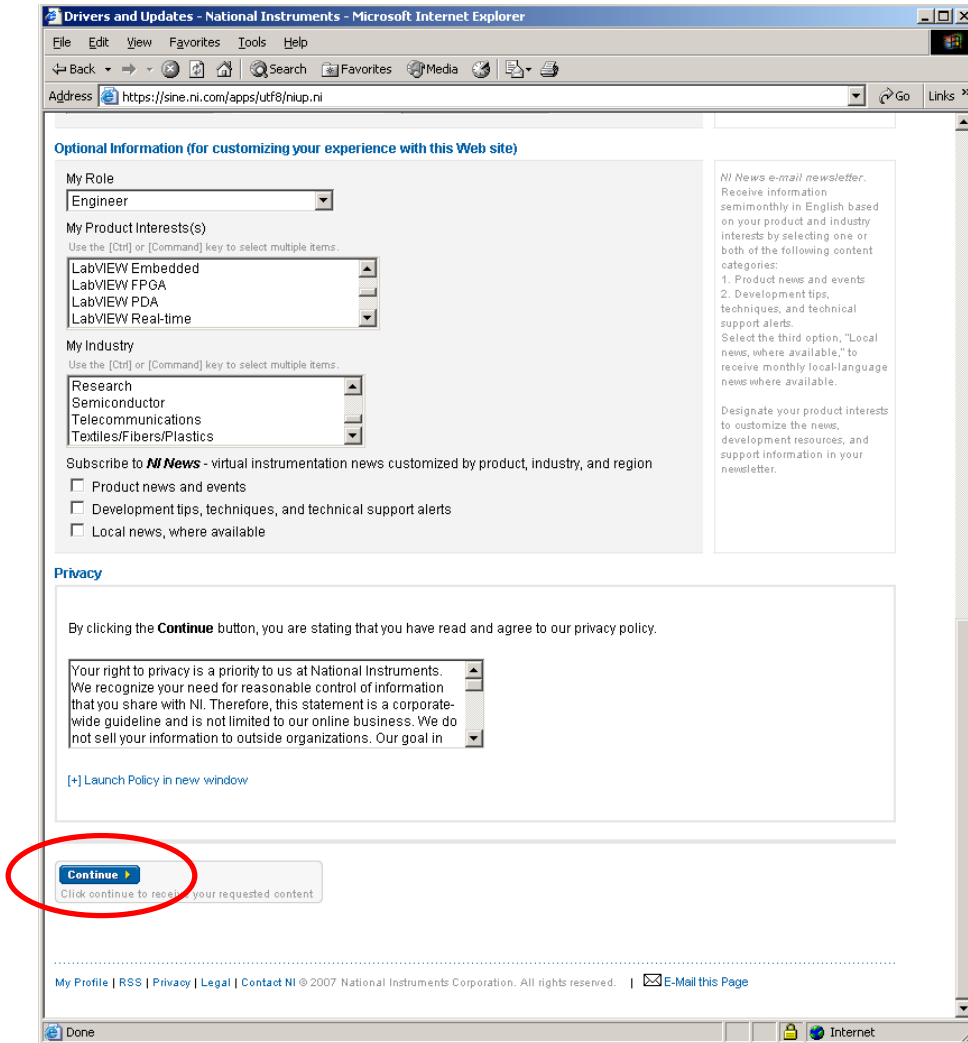
* Company Name

* Street Address 1

Receive all the latest news from NI at your home or office. Complete this section to get updates on NI products, local NI events and seminars - excellent

Done Internet

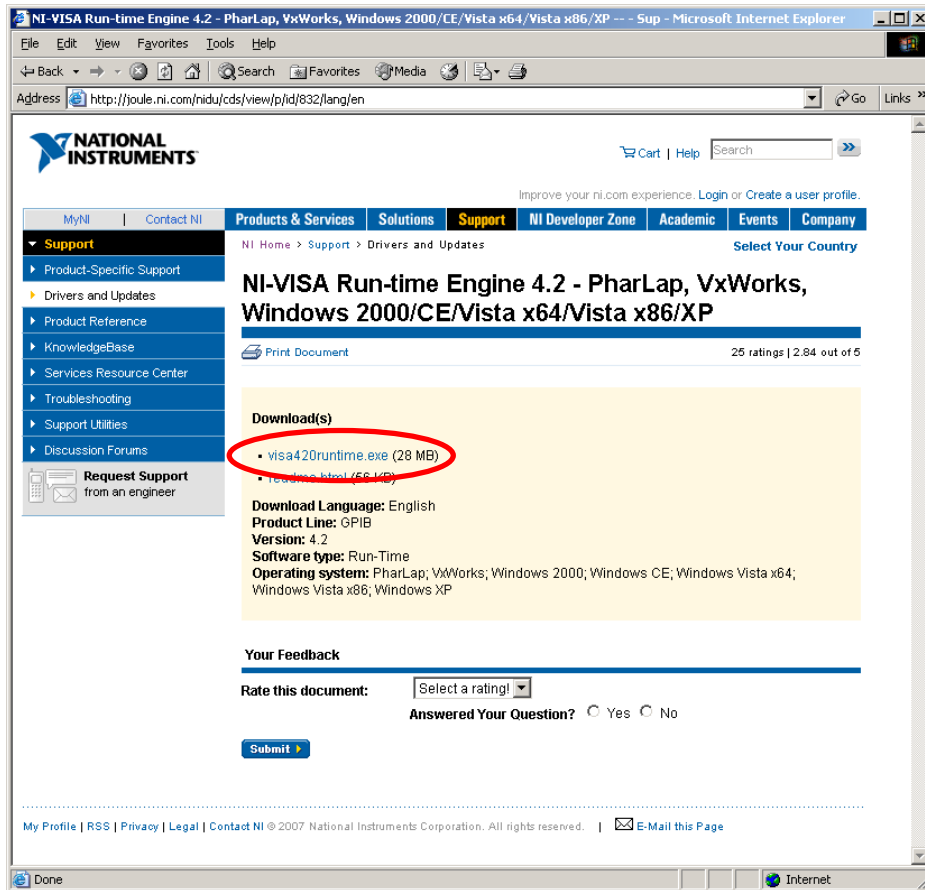
- 7) After inputting the required information, scroll down the page and click the [Continue] button.



8) “Security Alert” may be displayed, depending on your web browser setting. Click [OK] to continue.

The download page of the VISA driver is displayed again.

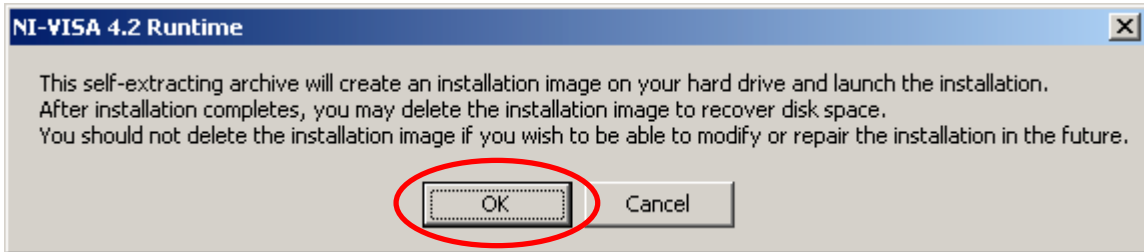
Right-click “visa420runtime.exe” and select “Save Target As...”.



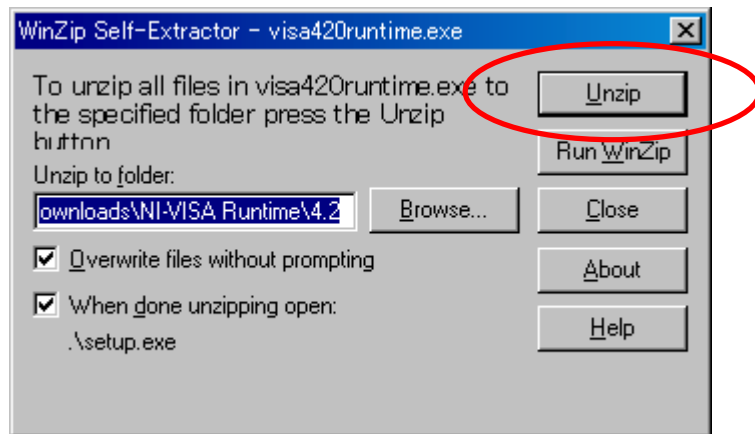
2.2 Installation Procedure

- 1) Execute the downloaded exe file.

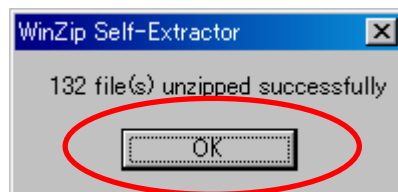
A self-extracting message appears. Click the [OK] button.



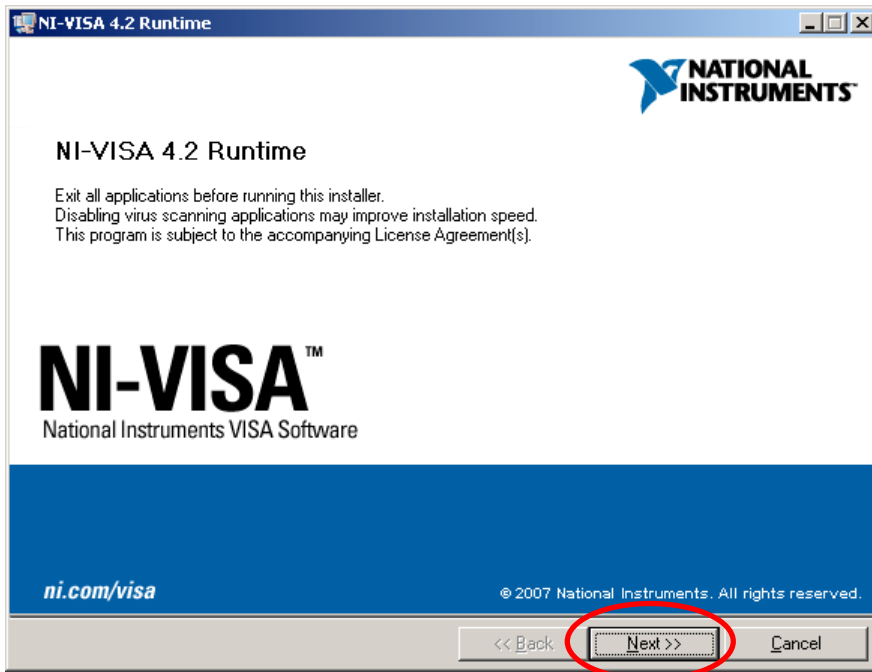
- 2) The unzip destination specification dialog box then appears. Just click the [Unzip] button.



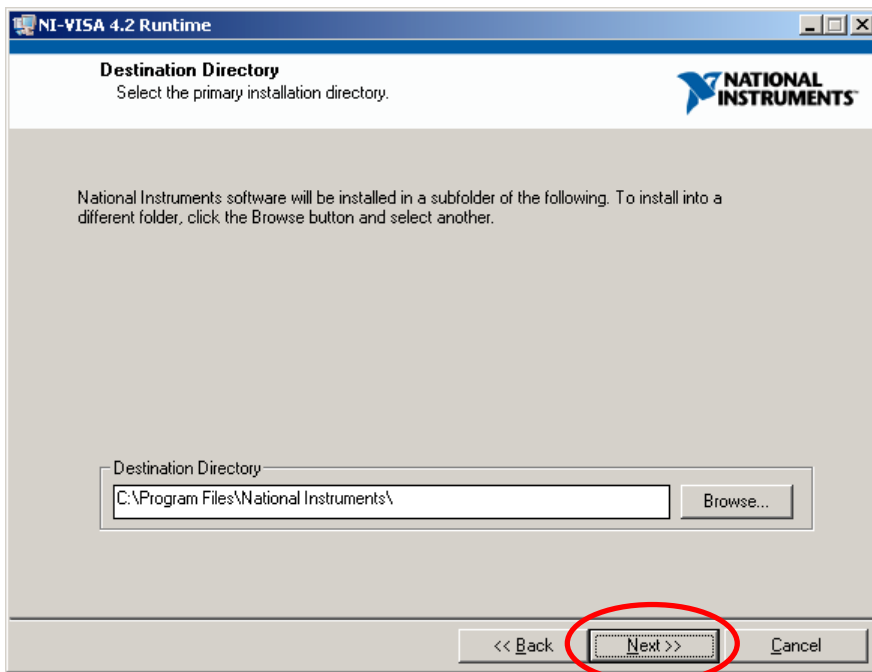
- 3) The self extraction completion message appears. Click the [OK] button.



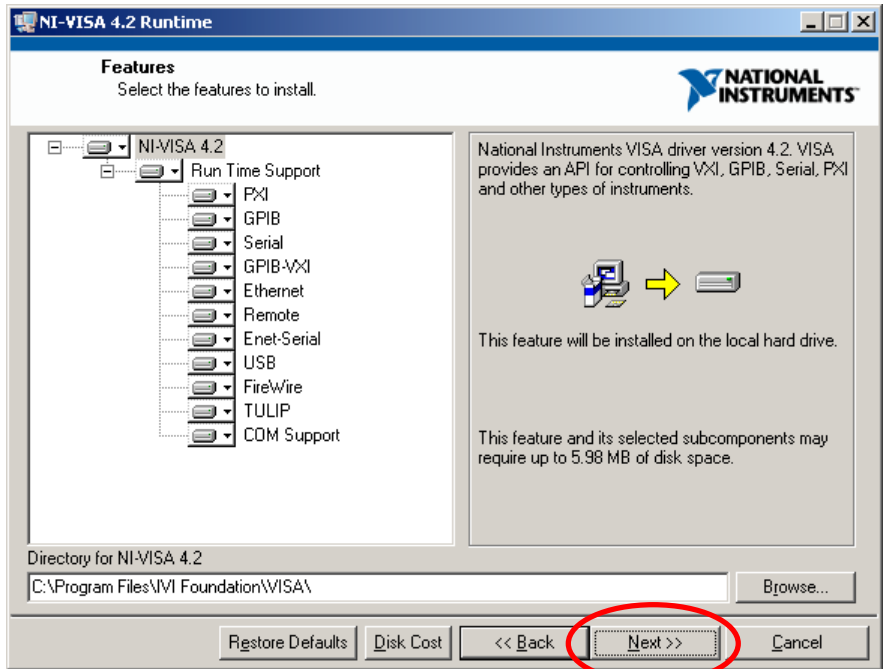
- 4) The VISA driver installer starts.
Click the [Next] button.



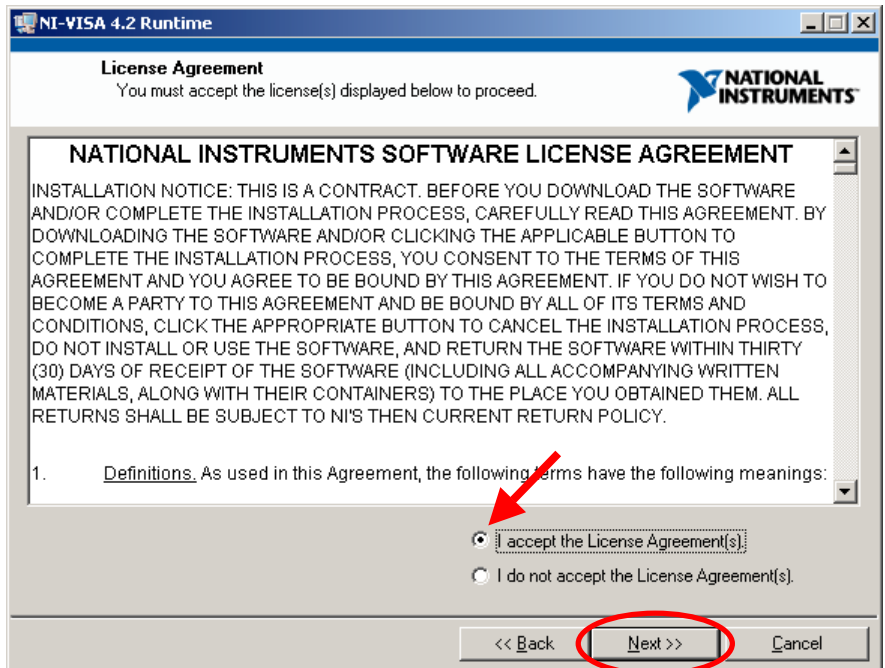
- 5) Specify the destination directory. Just click the [Next] button.



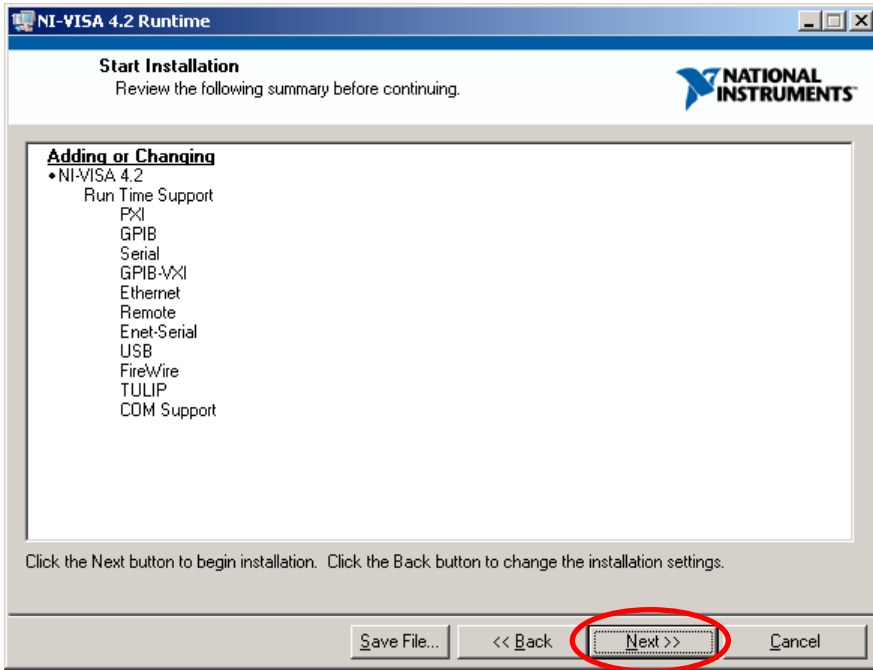
- 6) Select the features to install, then click the [Next] button.



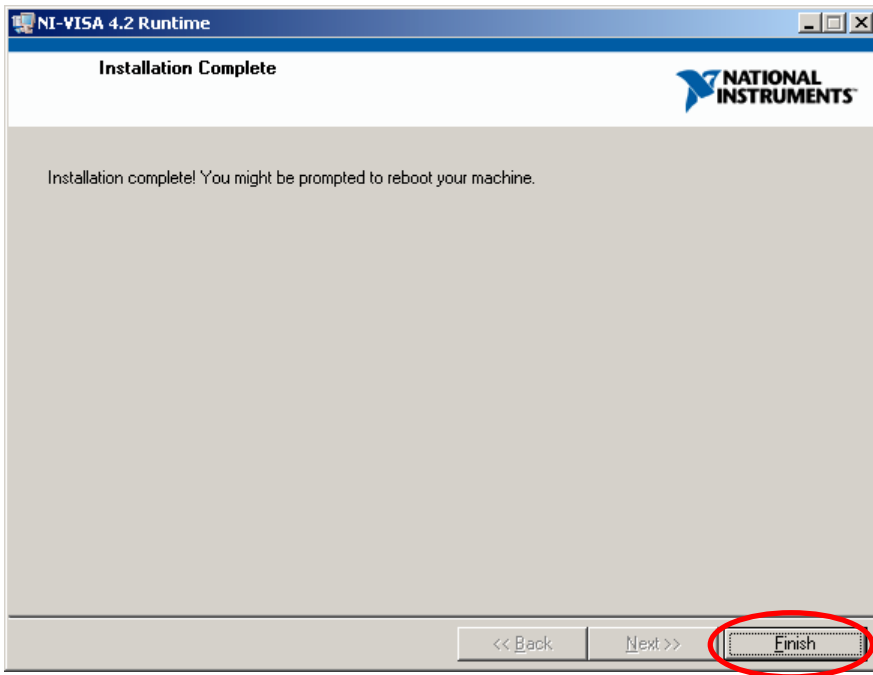
- 7) The “License Agreement” screen is displayed. Select the [I accept the License Agreement(s)] radio button, then click the [Next] button.



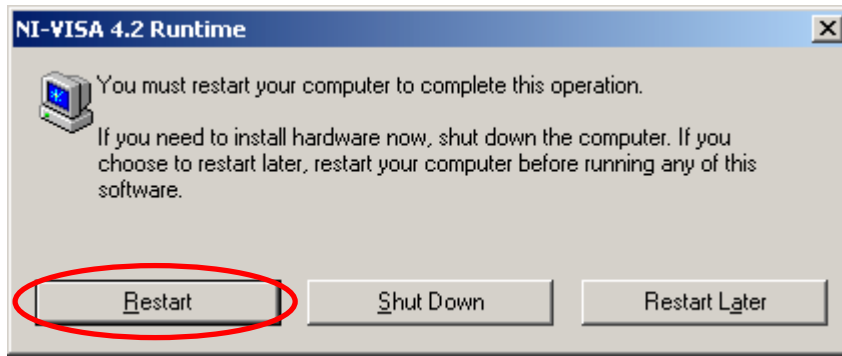
- 8) The “Start Installation” screen is displayed. Click the [Next] button.



- 9) The “Installation Complete” screen is displayed. Click the [Finish] button.



10) The dialog box prompting restart is displayed. Click the [Restart] button.



11) This completes VISA driver installation.

NOTES

- Reproduction of the contents of this procedure is forbidden by applicable laws.
 - The contents of this procedure may be revised without notice.
 - Information provided in this procedure is intended to be accurate and reliable.
However, we assume no responsibility for any damage regarding the contents of this procedure.
 - We assume no responsibility for influences resulting from the operations in this procedure.
-

VISA Download Procedure

NF Corporation

6-3-20, Tsunashima Higashi, Kohoku-ku, Yokohama
223-8508 JAPAN

Phone +81-45-545-8128

<http://www.nfcorp.co.jp/english/>

© Copyright 2007, **NF Corporation**

