



PROGRAMMABLE CURRENT AMPLIFIER

**CA5351**

---

USB Driver Installation Manual



DA00082557-001

PROGRAMMABLE CURRENT AMPLIFIER

**CA5351**

USB Driver Installation Manual



## ———— Preface ————

Thank you very much for purchasing our “**CA5351 PROGRAMMABLE CURRENT AMPLIFIER**”

This manual explains about installing the USB driver for externally controlling CA5351 by connecting through USB.

### ● This manual has the following chapter organization

#### 1. OUTLINE

Explains the operating environment of CA5351 USB driver and configuration of the installation file.

#### 2. INSTALLATION METHOD

Explains the method of installing CA5351 USB driver.

This driver is exclusively for controlling CA5351, and cannot be used for controlling other measurement equipments.

---

# CONTENTS

---

	Page
1. OUTLINE .....	1-1
1.1 Overview.....	1-2
1.2 Operating Environment .....	1-2
1.3 File Configuration.....	1-2
2. INSTALLATION METHOD .....	2-1
2.1 Connecting with the PC.....	2-2
2.2 Installation Method (Windows 7 / Windows 8.1).....	2-3
2.3 Installation Method (Windows 10).....	2-8

# 1. OUTLINE

1.1 Overview .....	1-2
1.2 Operating Environment .....	1-2
1.3 File Configuration .....	1-2

## 1.1 Overview

When connecting CA5351 using “USB Cable” (sold separately) and controlling it remotely, install “USB Driver” according to this manual.

## 1.2 Operating Environment

[PC]

Before installing this software, make sure that the system satisfies the following environment.

OS	Microsoft Windows 7	32 bit/64 bit
	Microsoft Windows 8.1	32 bit/64 bit
	Microsoft Windows 10	32 bit/64 bit
USB port	USB 2.0	

[USB cable]

USB2.0AB type (A male terminal, B male terminal)

## 1.3 File Configuration

In “NF\_CA5351\_CommClass (zip file)” downloaded from the website of NF Corporation contains the following files.

- USB driver installation definition file (inf file)  
NF\_CA5351\_CommClass.inf  
It is used when installing the USB driver.
- USB driver security catalog file (cat file)  
NF\_CA5351\_CommClass.cat  
It is used when installing the USB driver.
- CA5351\_USB Driver Installation Manual (PDF file)



## 2. INSTALLATION METHOD

2.1 Connecting with the PC .....	2-2
2.2 Installation Method (Windows 7 / Windows 8.1)	2-3
2.3 Installation Method (Windows 10) .....	2-8

### 2.1 Connecting with the PC

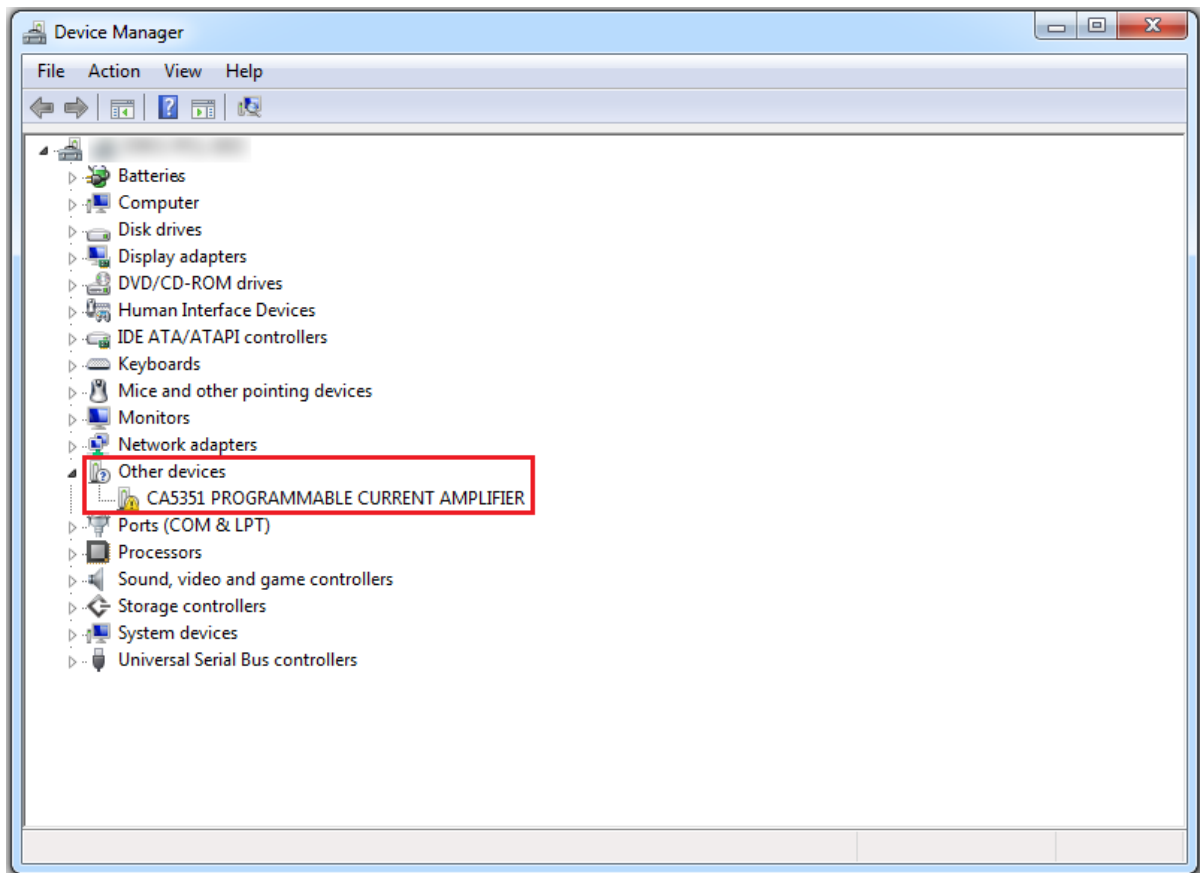
Before installing the USB driver of CA5351, connect CA5351 and computer using the “USB Cable”.

1. Connect the A terminal of “USB Cable” to the USB port of the PC.
2. Turn on the power of CA5351, and after the main screen appears, connect the B terminal of “USB Cable” to CA5351.
3. Procedure after connecting to CA5351 differs according to the OS of your PC.
  - When using Windows 7 or Windows 8.1 refer to “2.2 Installation Method (Windows 7 / Windows 8.1)”.
  - When using Windows 10, refer to “2.3 Installation Method (Windows 10)”.

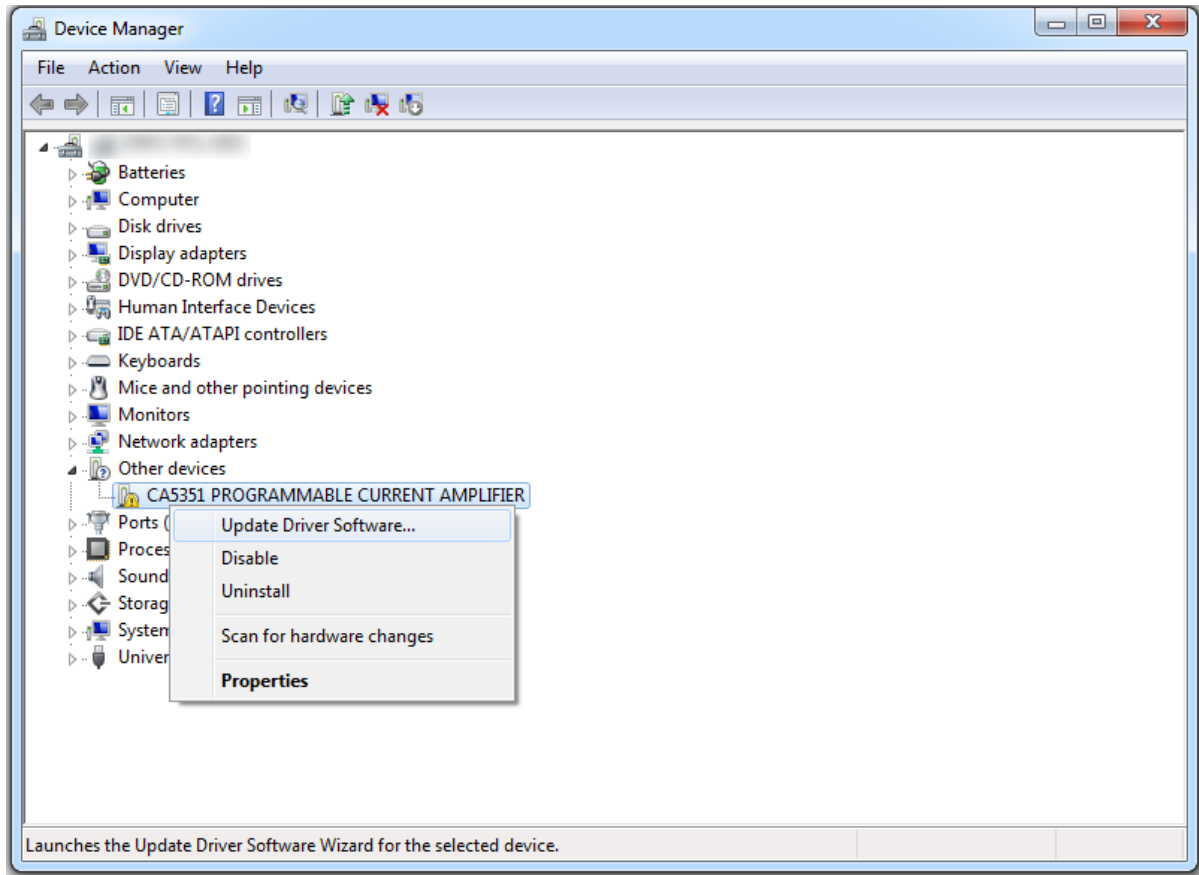
## 2.2 Installation Method (Windows 7 / Windows 8.1)

Step 1) Open Device Manager, and check the device.

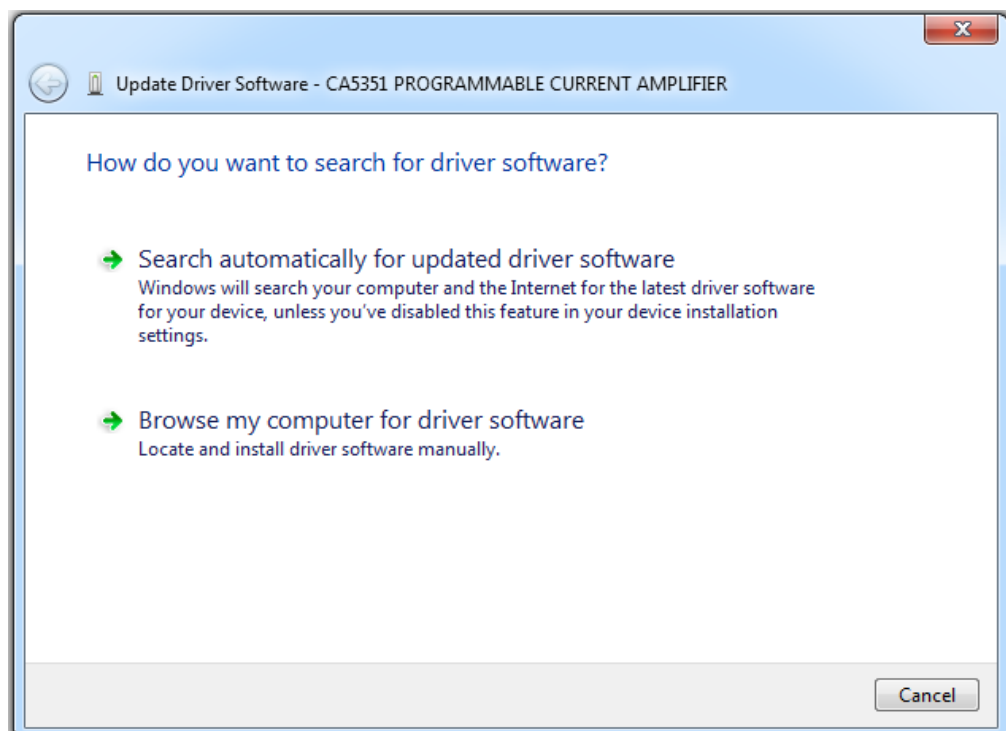
The device will be displayed on “Other devices” with “!(Warning)” mark.



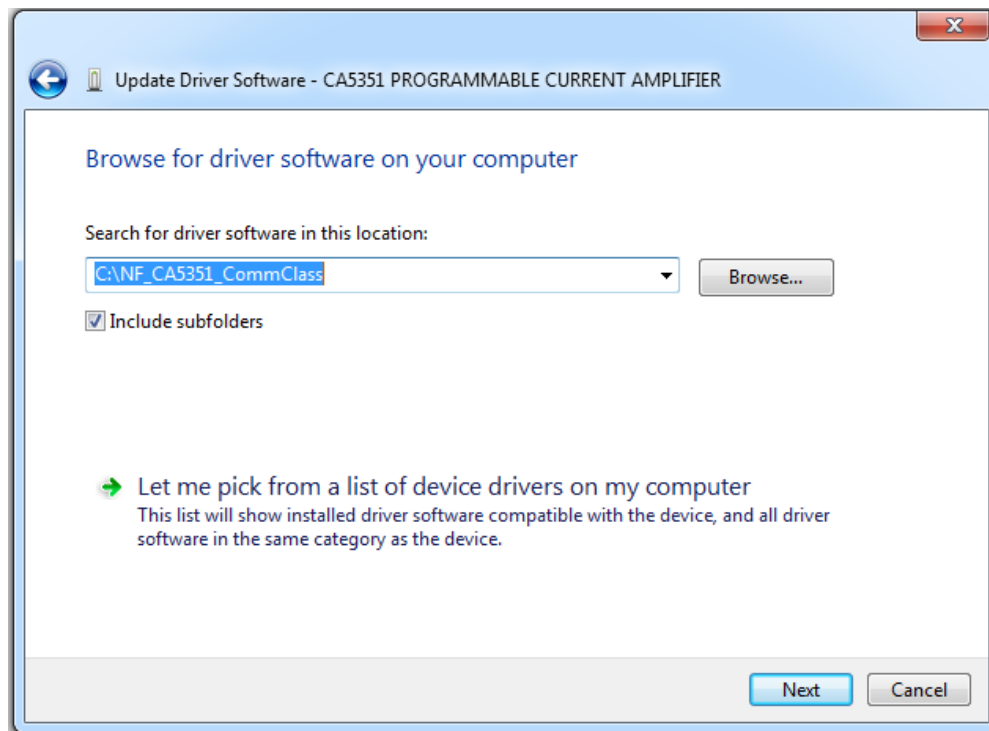
Step 2) Right click the unknown devices having “!(Warning)” mark, and select “Update Driver Software..” from the displayed menu.



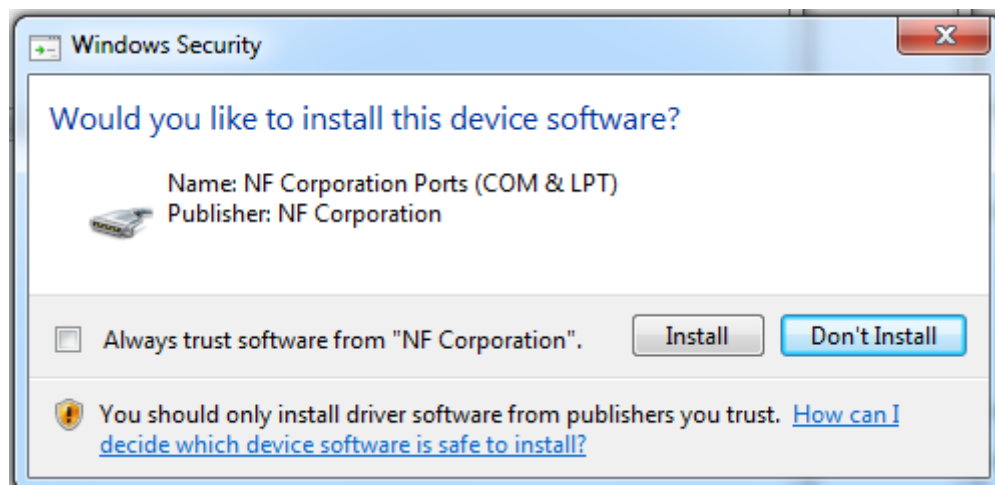
Step 3) Once the “Update Driver Software” dialog appears, click “Browse my computer for driver software”.



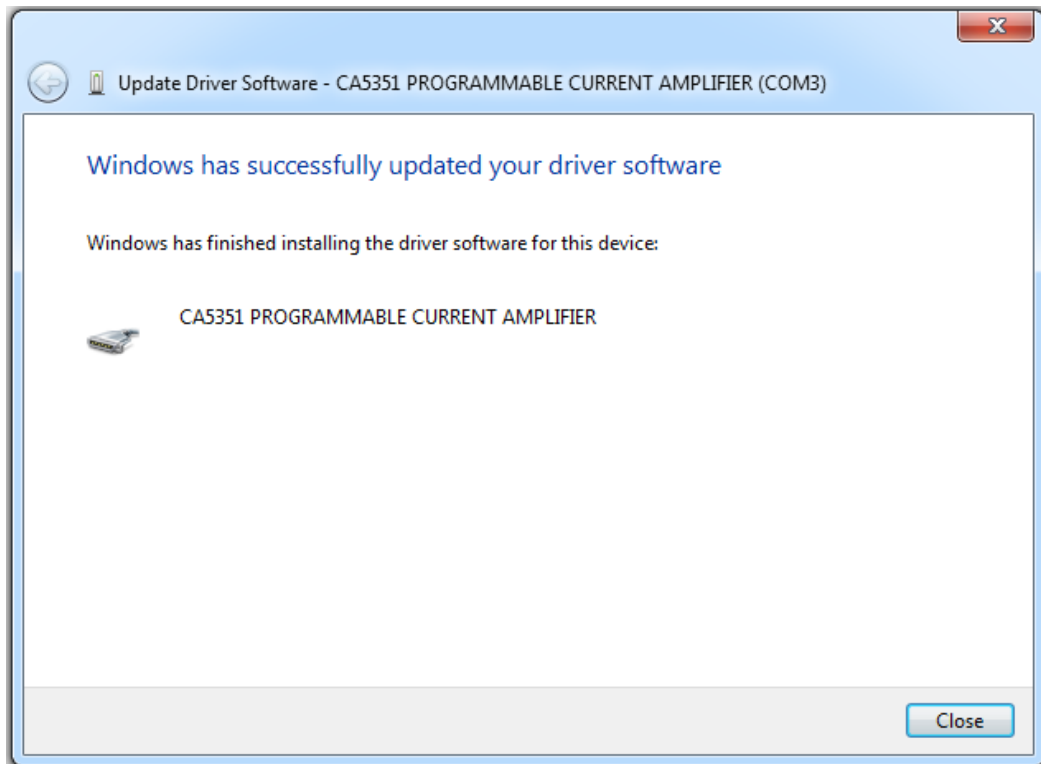
- Step 4) Click the “Browse” button, specify the folder where you opened the downloaded driver file.  
Click the “Next” button.



- Step 5) When the following dialog appears during installation, click “Install”.

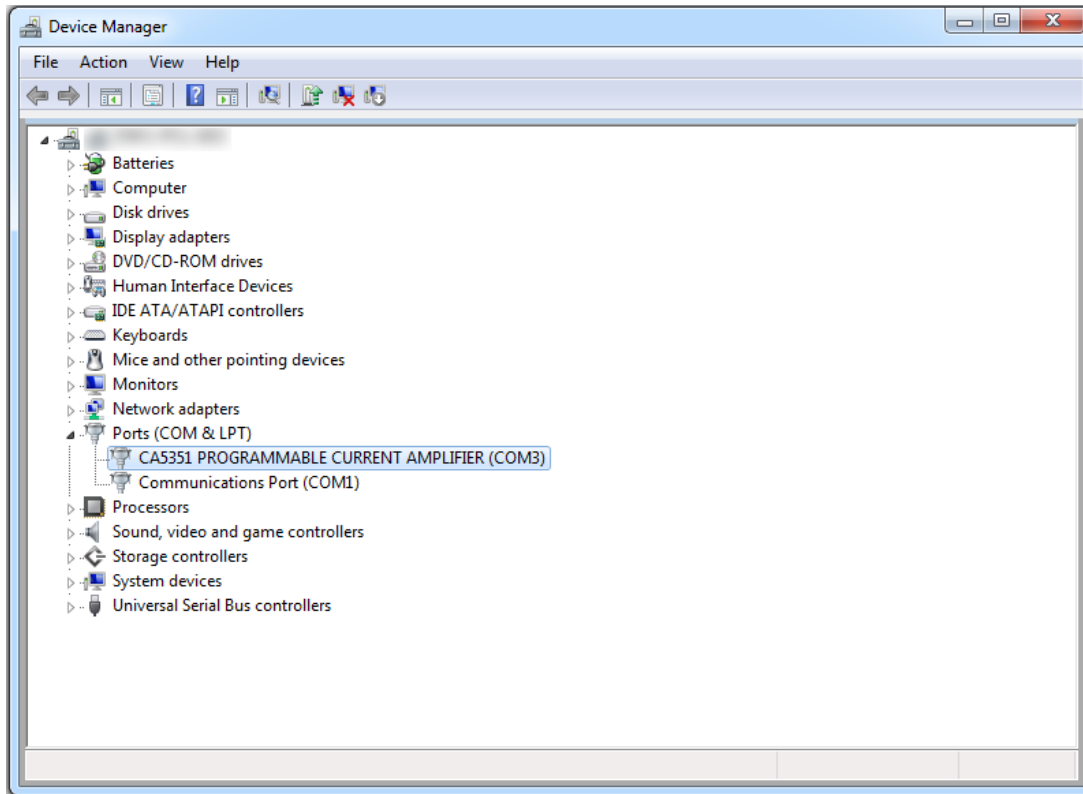


Step 6) After installation of the device driver is complete, click the “Close” button.



Step 7) Check in “Device Manager” whether the driver is correctly installed or not.

As shown in the following figure, check that “CA5351 PROGRAMMABLE CURRENT AMPLIFIER” appears in the “Ports (COM & LPT)” tree.

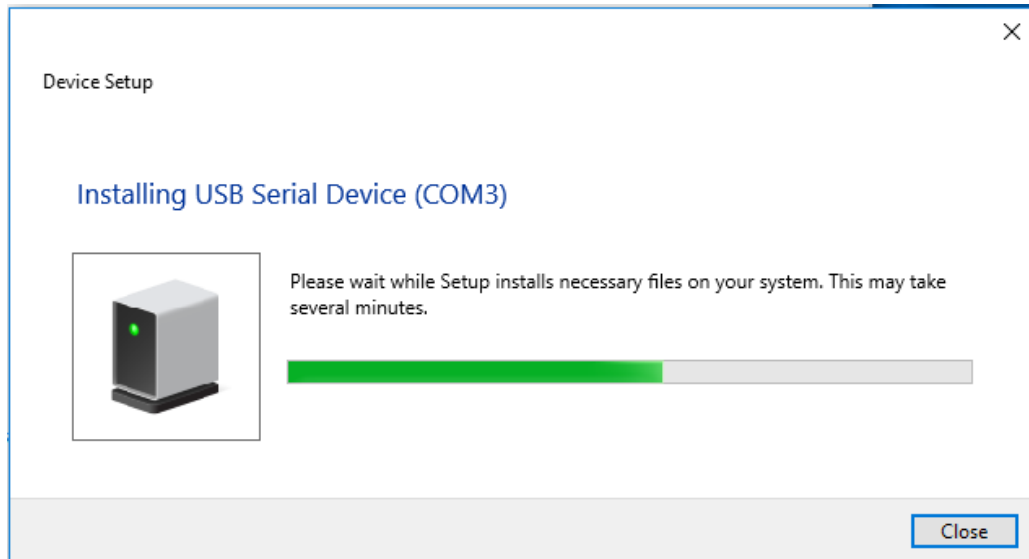


With this, installation of device driver of this device is complete.

## 2.3 Installation Method (Windows 10)

After connecting the equipment to a PC, default driver of Windows will be installed.

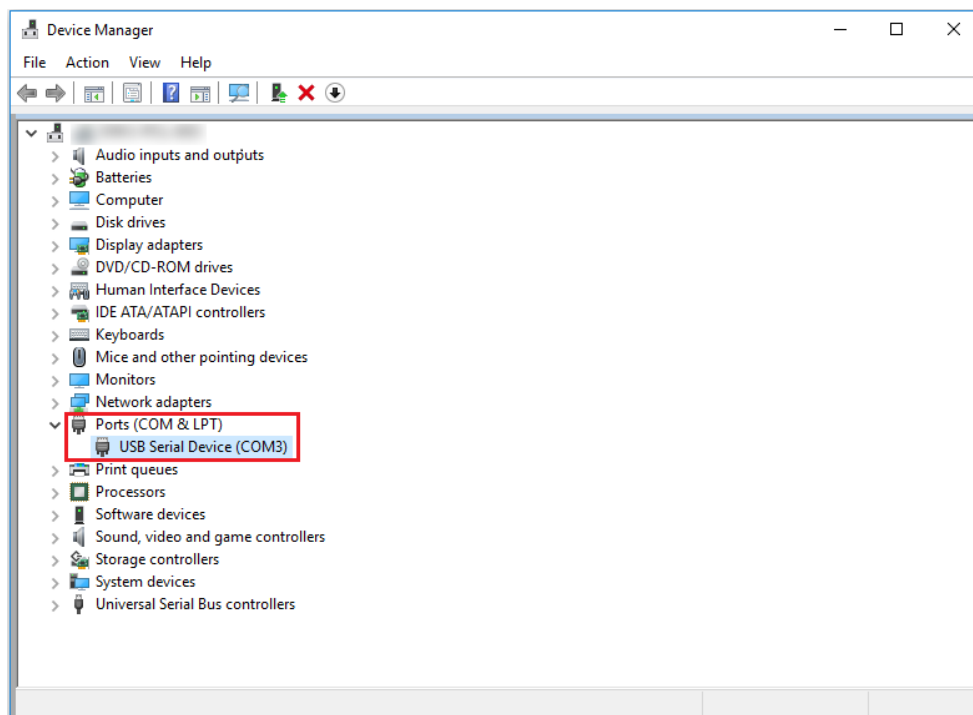
Step 1) After connecting the equipment to a PC, the following pop-up message will appear. Wait until this dialog will disappear.



Step 2) Open Device Manager, and check the devices for which the installation.

“USB Serial Device(COM n)” appears in the “Ports (COM & LPT)” tree, default driver of Windows is installed.

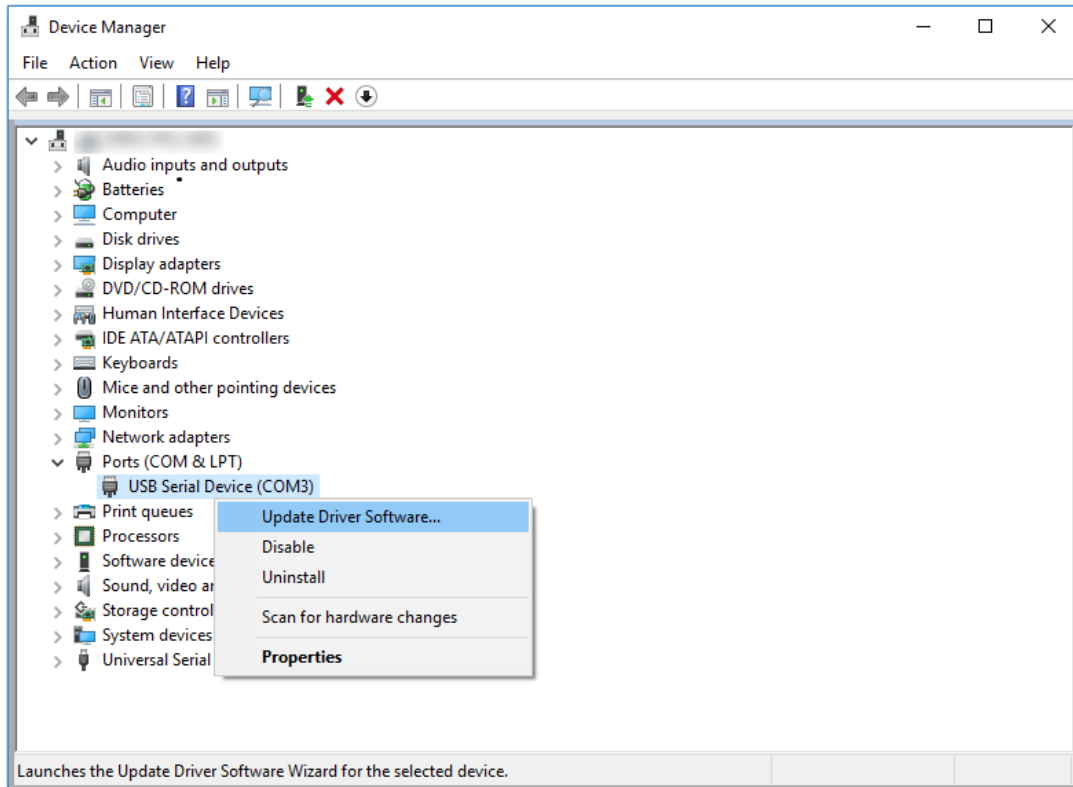
When devices for which is now known whether the installation failed or not, “!(Warning)” mark will be appear.





## 2. INSTALLATION METHOD

Step 3) If the installation is failed, driver of NF corporation should be installed.  
Right click the unknown devices having “!(Warning)” mark, and select  
“Update Driver Software..” from the displayed menu.



The following operations are as same as from Step 3) to Step 7) of “Installation Method(Windows 7 / Windows8.1)”. Please refer to those sections.



---

## NOTES

---

- Reproduction of the instruction manual, part or whole, is forbidden without prior written permission.
- The contents of the instruction manual are subject to change without notice.
- Information provided in the instruction manual is intended to be accurate and reliable. However, we assume no responsibility for any damage regarding the contents of the instruction manual.

If you have any uncertainty or you found an error or omission, please contact NF Corporation or one of our representatives from which you purchased the product.

---

## CA5351 USB Driver Installation Manual

### **NF Corporation**

6-3-20 Tsunashima Higashi, Kohoku-ku, Yokohama 223-8508, JAPAN

Phone: +81-45-545-8128

<http://www.nfcorp.co.jp/>

© Copyright 2020, **NF Corporation**

